

Honeyville Screw Conveyors

Flanged U-Trough



Galvanized For Long Life and Low Maintenance

6 Sizes – Capacities up to 10,750 BPH

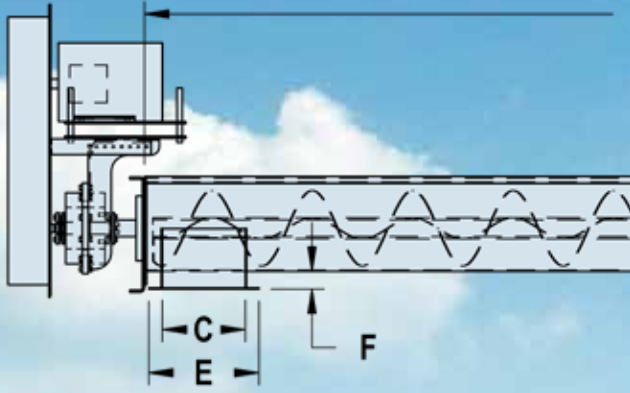


Honeyville

FLANGED U-T

Features

- Heavy gauge steel, formed top flanged U-Trough sections.
- Pre-fitted flanged trough sections.
- Standard galvanized bolt-on covers.
- Connector flanges pre-fitted and welded to trough ends.
- Hot-dipped galvanized *after* welding.
- Class II Dodge torque-arm II speed reducers with overhead motor mounts and enclosed belt guard.
- Motor mount options: overhead, left or right sides.
- Trough and Screw options: standard, HD or XHD.
- Screw options: helicoid, sectional or shorter pitches.
- 226 Style Hanger bearing options: wood, nylon or UHMW. Designed for your specific application.



Flanged U-Trough Screw Conveyor Sp

Auger Dia.	Tube Dia.	Capacity Range
6	7	200 - 450 BPH
9	10	500 - 1,700 BPH
12	13	2,000 - 3,500 BPH
14	15	3,500 - 5,500 BPH
16	17	6,000 - 8,000 BPH
18	19	8,500 - 10,750 BPH

*All dimensions shown above are in inches

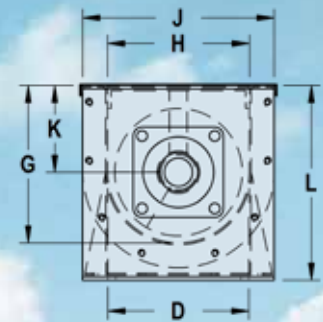
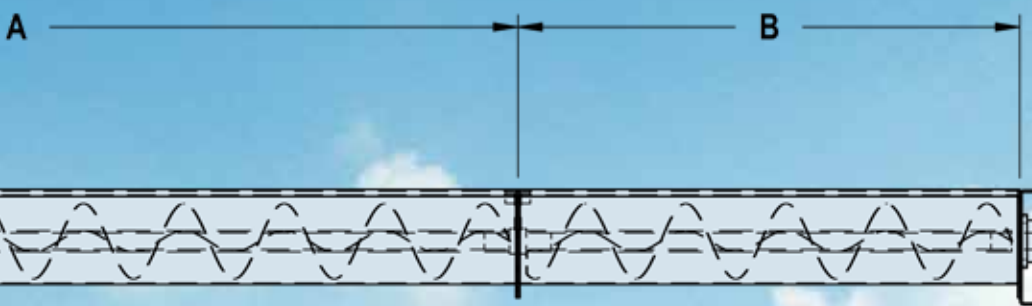


Easily accessible galvanized bolt-on cover. Overhead motor mount and Dodge speed reducer shown without belt guard, drive sheaves and motor.



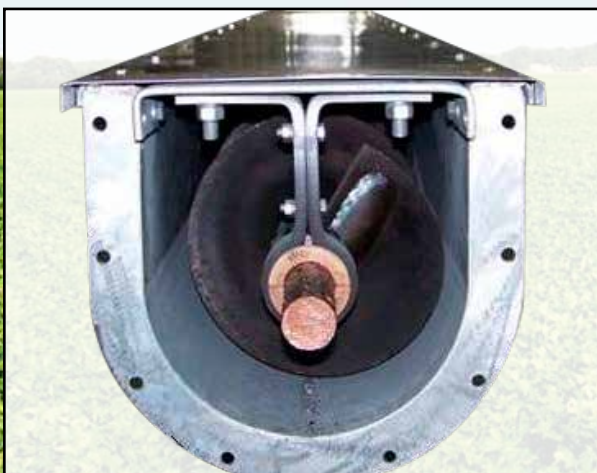
Class II Dodge torque-arm II speed reducers powered by the appropriately sized Baldor motor resulting in a smooth running constant speed drive.

TROUGH SCREW CONVEYORS



END VIEW

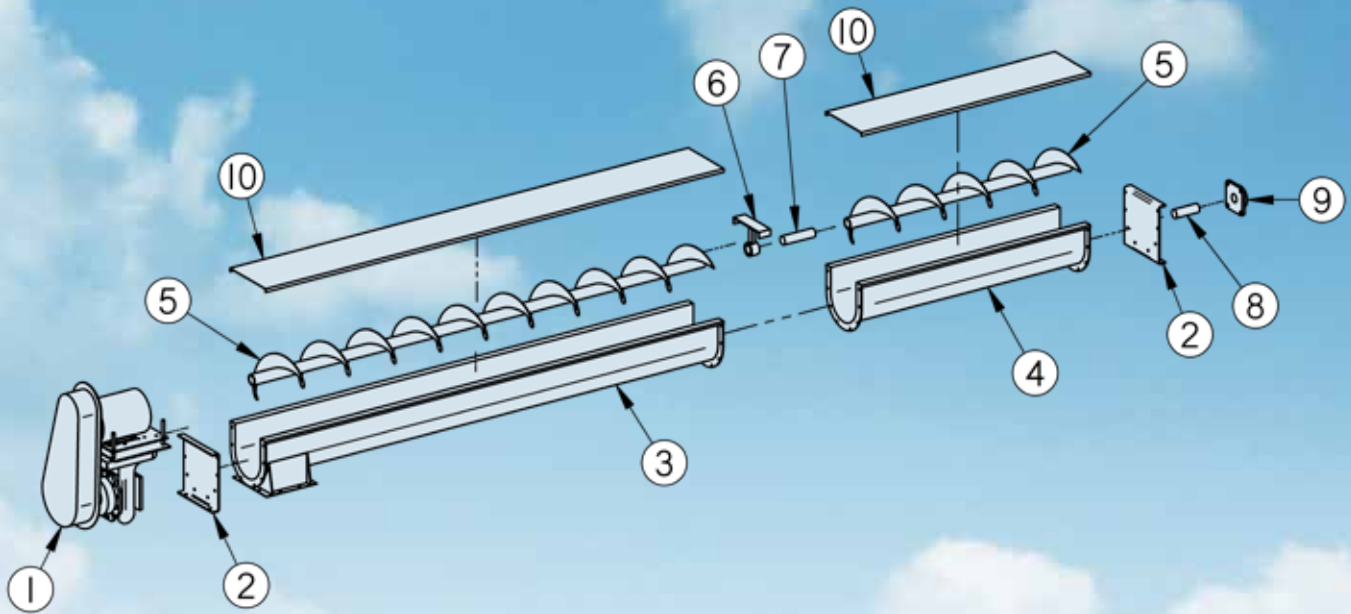
Specifications												Material Specifications		
	A	B	C	D	E	F	G	H	J	K	L	Trough	Cover	Shaft Dia.
	120	60	6	6	8-11/16	2-3/8	8-1/16	7	9-3/4	4-1/2	10-1/4	14 Ga.	16 Ga.	1-1/2
	120	60	10	10	13-1/4	2-1/8	11-3/16	10	13-1/2	6-1/8	13-1/2	14 Ga.	16 Ga.	1-1/2
	144	72	12	12	15-3/16	3-1/8	14-7/16	13	17-1/4	7-3/4	17-1/4	12 Ga.	14 Ga.	2
	144	72	14	14	17-3/16	3-1/8	16-15/16	15	19-3/8	9-1/4	20	12 Ga.	14 Ga.	2-7/16
	144	72	16	16	19-3/16	3-1/8	19-1/4	17	21-1/4	10-5/8	23-1/8	12 Ga.	14 Ga.	3
	144	72	18	18	21-3/16	3-1/8	21-5/8	19	23-1/2	12-1/8	25	10 Ga.	14 Ga.	3



226 Style Hanger bearings with insert options of wood, nylon or UHMW. Made for your specific application.



Optional bolt-in UHMW liner for extended trough life and lower maintenance.



Item	Description
1	Drive Package
2	End Plate
3	U-Trough with Discharge
4	U-Trough
5	Screw

Item	Description
6	Hanger Bearing
7	Coupler Shaft
8	End Shaft
9	Flange Bearing
10	Cover

To operate at rated capacities, processing equipment must be fed with a sufficient supply of material. Honeyville U-Trough Screw Conveyors are designed to move dry, bulk materials and grains uniformly fed from pit hoppers, storage bins, and other conveying equipment.

Gently Moving Nature's Grains

Manufactured by



4200S 900W • Topeka, IN 46571
 Phone (800) 593-8377 • Fax (260) 593-2486
www.honeyvillemetal.com