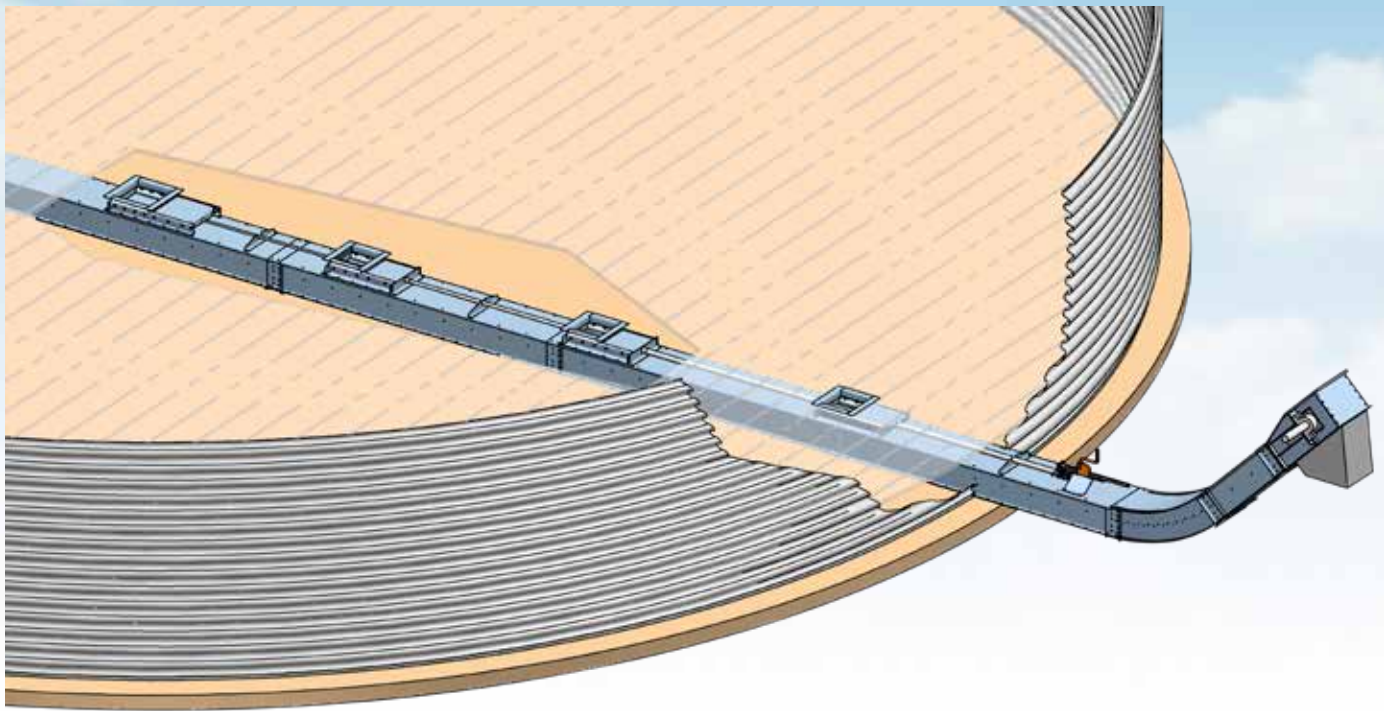


Honeyville

**Bin Unloading
Drag Conveyors**

GENTL-FLOW



Galvanized For Long Life **and Low Maintenance**

Capacities: 2,500 to 6,350 BPH

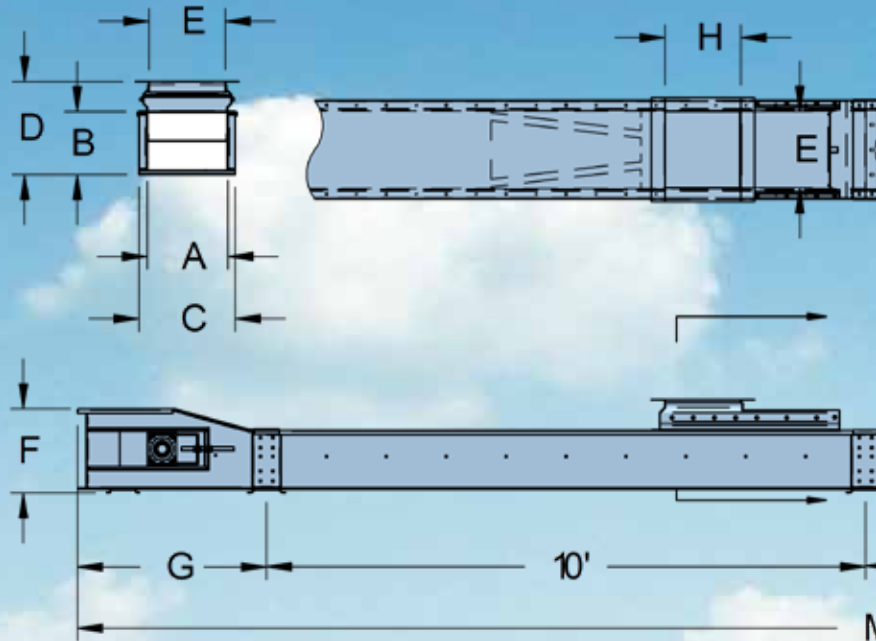


Honeyville

GENTL-FLOW BIN



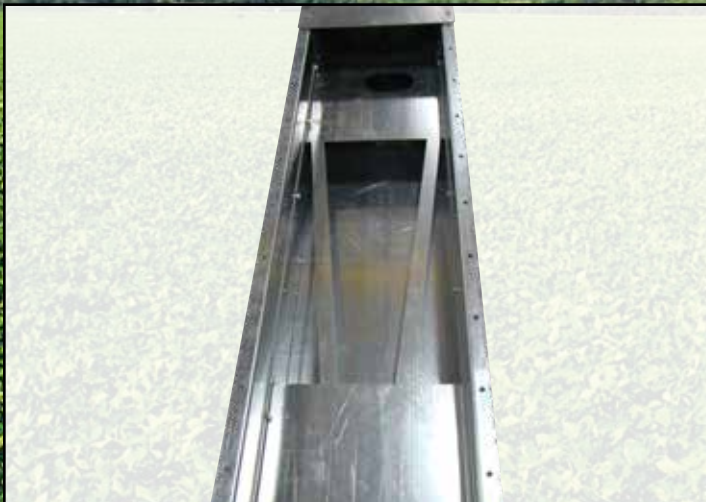
Typical application shown with 45° incline discharge.



Bin Unloading Drag Conveyor Dimensional Specifications

Model	Capacity Range	Chain	A	B	C	D	E	F	G	H	J	K	L
HD-F13BU	2,500 - 3,830 BPH	81XH	13	12-1/2	16-1/4	18-1/2	12-1/4	16-3/4	38	12-1/4	46	25-1/2	28-1/4
HD-F16BU	3,340 - 4,675 BPH	81XH	16	12-1/2	19-1/4	18-1/2	15-1/4	16-3/4	44	15-1/4	46	25-1/2	28-1/4
HD-F22BU	5,010 - 6,350 BPH	81XH	22	12-1/2	25-1/4	18-1/2	21-1/4	16-3/4	44	21-1/4	46	25-1/2	28-1/4

*All dimensions shown above are in inches

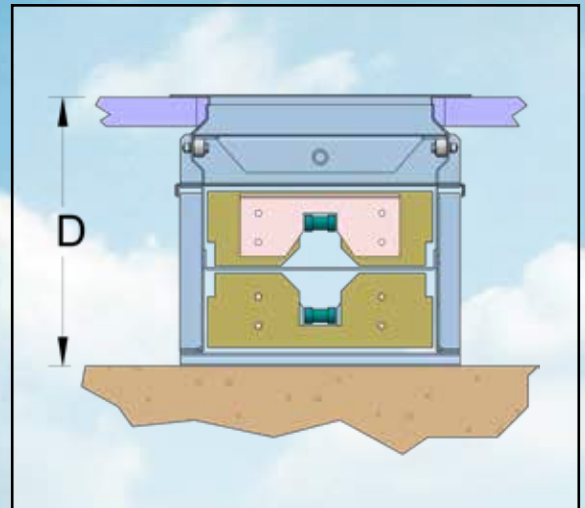
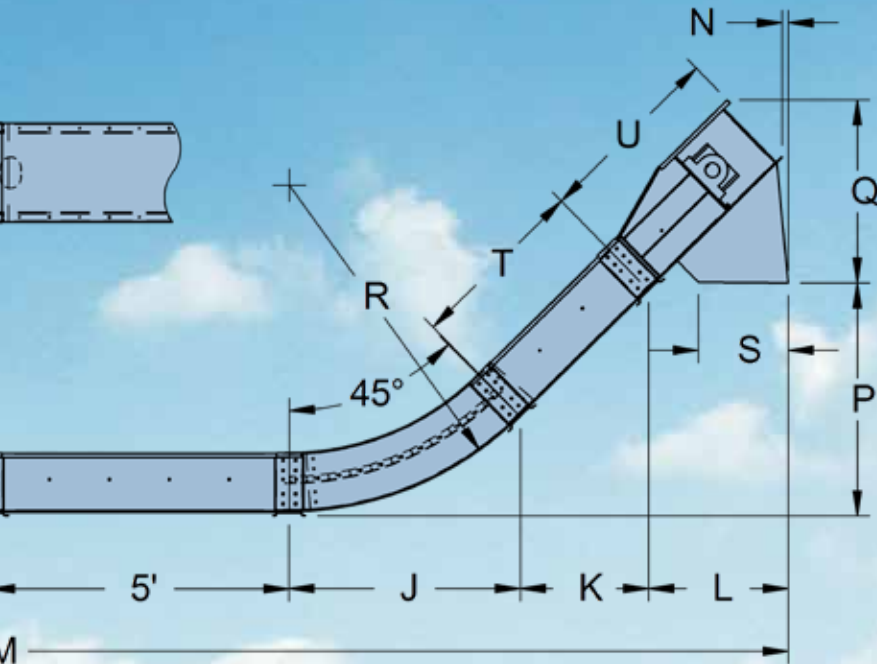


View of grain drop through opening (with covers removed).



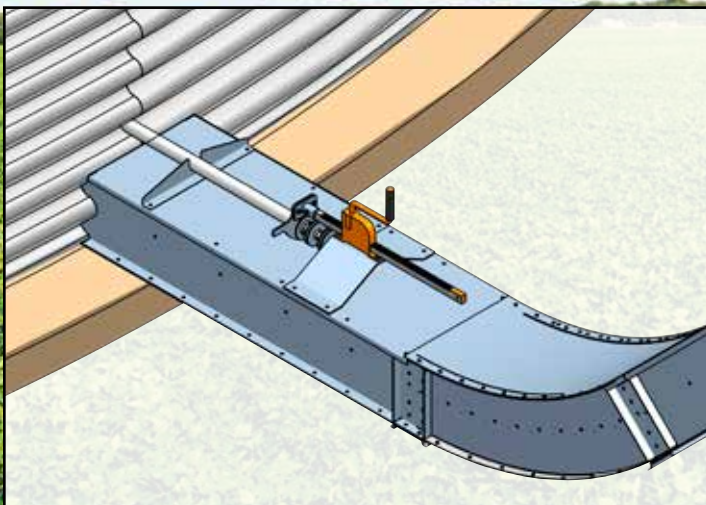
Head section 10 Ga. Galvanized steel with Class II Torque-Arm Type Gear and overhead motor mount.

UNLOADING DRAG CONVEYORS



Installed in a grain bin floor system with a floor height of 18½”.

									Galvanized Material Specifications				
	M	N	P	Q	R	S	T	U	Head & Tail	Bottom	Sides	Cover	Bottom Liner
4	317-3/4	1-1/2	47	36-1/4	65	18	36	38	10 Ga.	10 Ga.	12 Ga.	14 Ga.	3/16 AR
4	323-3/4	1-1/2	47	36-1/4	65	18	36	38	10 Ga.	10 Ga.	12 Ga.	14 Ga.	3/16 AR
4	323-3/4	1-1/2	47	36-1/4	65	18	36	38	10 Ga.	8 Ga.	12 Ga.	12 Ga.	3/16 AR



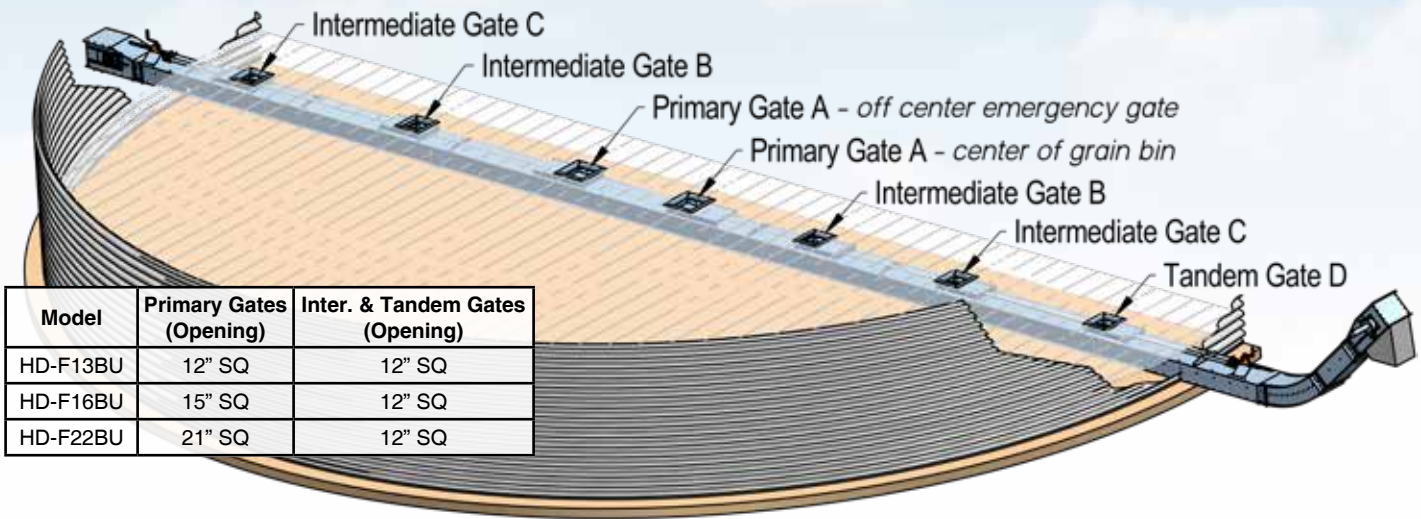
Rack and pinion power assist multi slide gate controller.



Long radius, high flow bend sections with optional bottom AR steel liner.

Features

- All G-90 galvanized, bolted construction, pre-assembled head, bend, tail and individual trough sections
- Conveyor sections throughout have formed top and bottom lips with formed bolt-on channels at adjoining points on the sides and bottom
- Bolt-in AR steel liner options for the bottom for extended conveyor life
- Heavy duty 81XH steel chain with welded steel attachments with 3/8" thick bolt-on UHMW paddles
- Class II Dodge torque-arm type gear reducers installed with fixed pitch v-belt drives
- Long radius, high flow incline bend sections available in 15°, 22.5°, 30°, 37.5° and 45°
- Installs under a grain bin floor system with a minimum floor height of 18-1/2" or in a concrete formed tunnel in the grain bin foundation
- Primary roller type slide gate for the bin center well with square opening sized to conveyor width, gate opening sizes are 12", 15", and 21"
- Multiple 12" square intermediate roller type slide gates with quantity and spacing dependent on the bin size
- Slide gates are controlled from outside the grain bin with manual tee handle controls, connected to the slide using 1/2", 1" and 1-1/2" NTP telescoping pipes
- Optional rack and pinion power assist multiple slide gate controller with hand crank and gate selection lever
- Openings for grain to drop through are pre-installed in 10' intervals along the center divider panel of the horizontal trough sections



Model	Primary Gates (Opening)	Inter. & Tandem Gates (Opening)
HD-F13BU	12" SQ	12" SQ
HD-F16BU	15" SQ	12" SQ
HD-F22BU	21" SQ	12" SQ

Gently Moving Nature's Grains

Manufactured by



4200S 900W • Topeka, IN 46571
 Phone (800) 593-8377 • Fax (260) 593-2486
www.honeyvillemetal.com