

***Honeyville***

# Catwalks and Towers



Galvanized For Long Life **and** Low Maintenance







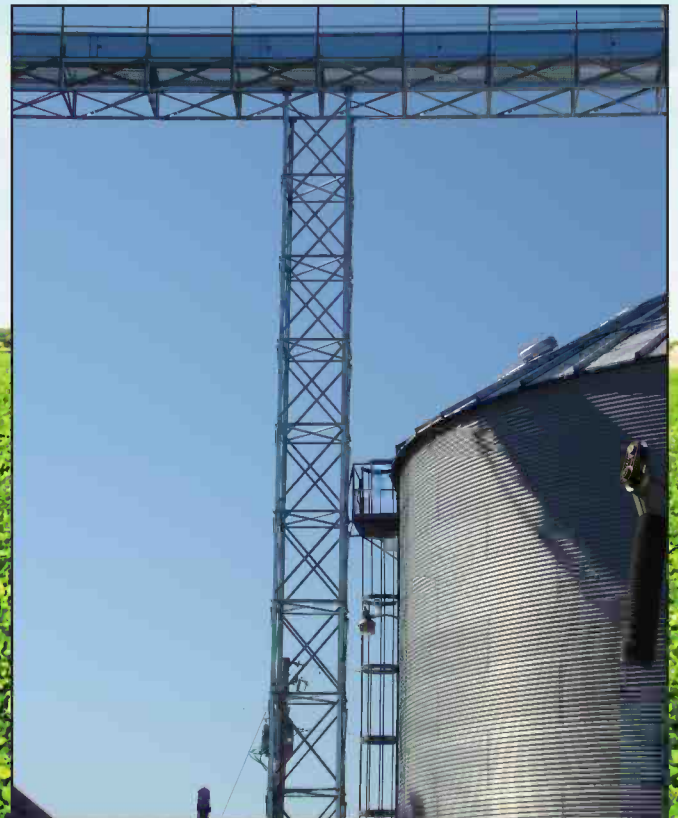
46" x 24" 4-Leg tower with ladder, safety cage and service platform

## Specifications

- 3" x 3" 8 Ga. formed angle side frames
- Side uprights for rail support  
1-1/2 x 1-1/2 x 1/4 angles
- Diagonal side braces  
1-1/2 x 1-1/2 x 1/8 angles
- Cross bracing used at top and bottom  
1-1/2 x 1-1/2 x 1/8 angles
- Hand rails 1-1/4 x 14 Ga. tubing  
tube joiner every 20'
- U bolt connector for hand rails -  
no drilling required
- 6" formed channel every 10' for  
conveyor support
- 1/2" x 1" grade 5 zinc plated bolts for  
side frame and all bracing
- Conveyor supports and manwalks  
designed with lower bridge truss
- 24" wide x 14 Ga. galvanized grip  
surface walkway



50" x 6" 2-Leg bin sidewall tower  
with a conveyor support



46" x 46" 4-Leg tower  
with conveyor support





Conveyor support with conveyor and manwalk in foreground



24" tall lower bridge truss with diagonal braces on sides, top and bottom cross bracing

The Honeyville designed conveyor support system with walkway has been engineered, tested and certified to accommodate the following conditions based on 40' clear span structures: weight loading of 140 lbs. per lineal foot, snow loading of 55 lbs. per square foot, wind loading of 110 MPH.

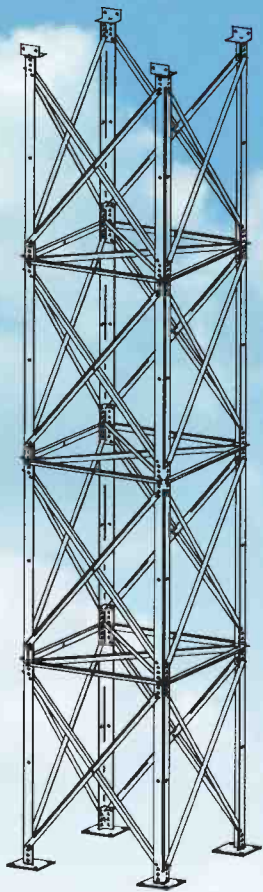


24" wide bridged manwalk: galvanized grip surface walkway, 42" tall handrail, 59" O.A. height

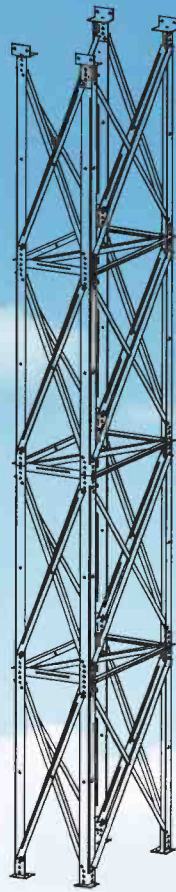


46" wide conveyor support: 22" for conveyor and 24" for galvanized grip surface walkway - 42" tall with handrail

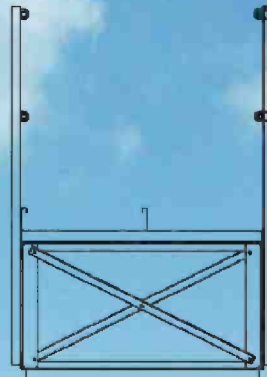




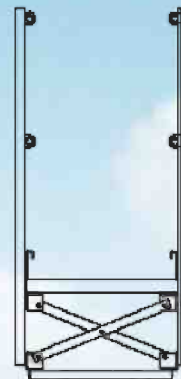
46" x 24"  
4-leg tower



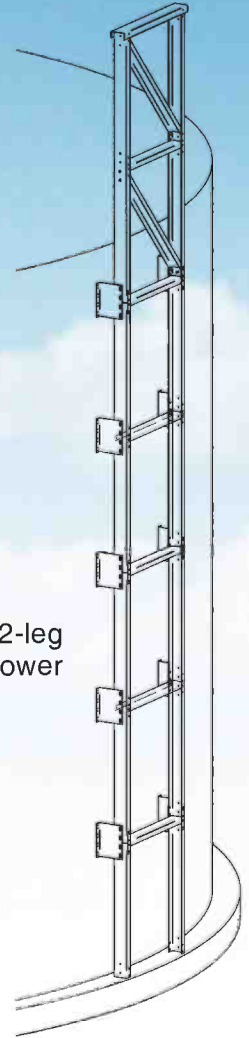
46" x 46"  
4-leg tower



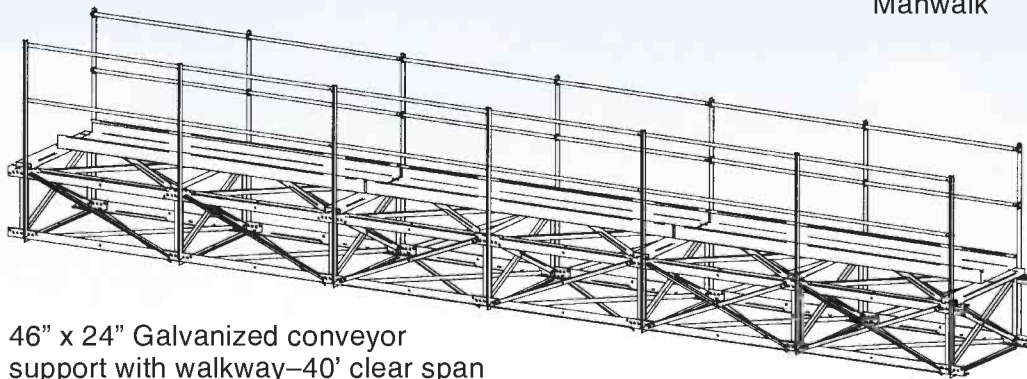
46" x 24"  
Conveyor support



24" x 12"  
Manwalk



50" x 6" 2-leg  
sidewall tower



46" x 24" Galvanized conveyor  
support with walkway—40' clear span

# Built for years of dependable service!

Manufactured by



4200S 900W • Topeka, IN 46571  
Phone (800) 593-8377 • Fax (260) 593-2486  
[www.honeyvillemetal.com](http://www.honeyvillemetal.com)